

PANEL HEATER

**Instruction Manual
Model MA0136PH**

Read in full and retain for future use



MICASA branded product provides an affordable range of well presented and elegant home ware and appliances. Products which are ranged and selected are chosen to suit your contemporary lifestyle and cater for your home ware needs today. Micasa aims to provide products which are fashionable, affordable, and reliable to meet your home ware demands.

MICASA will provide value for money products to make every day home life more enjoyable and convenient.

The **MICASA** range of products is continually developing and new products will be introduced with expansion of the range. So keep in touch for further news on new products in the future.

We hope you enjoy your experience with **MICASA**

Contact enquiry@micasa-appliances.com

Visit www.micasa-appliances.com

Helpline

New Zealand call toll free 0508-274-2722

Australia call +64-9-974-9206

Distributed by

Asia Pacific Brands Limited

PO Box 113001 Broadway

Newmarket, 1149

Auckland, New Zealand

FEATURES

Eco wall heater

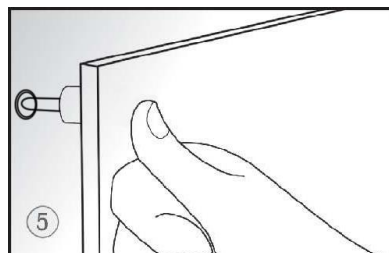
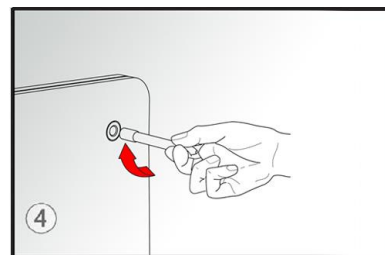
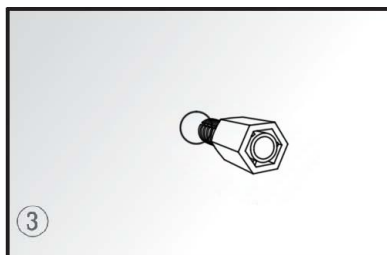
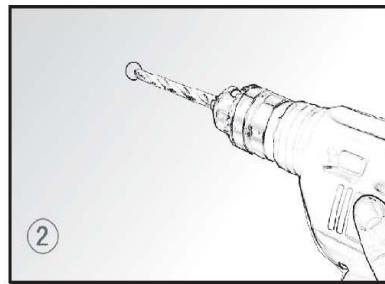
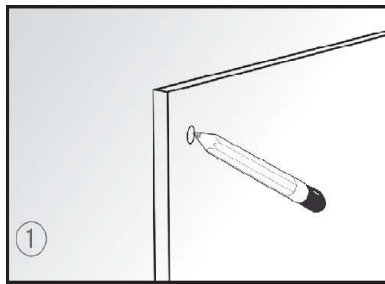
- ✓ Paintable to match your room (water based paints only)
- ✓ Suitable for 12m² size room
- ✓ Low running cost compared to other heating types, only 400watts
- ✓ Robust construction with ultra slim stylish design, <11mm thickness
- ✓ Eco friendly
- ✓ Class 11 electrical safety

INSTALLATION

Before using this appliance please read and fully understand the safety directions in this manual. Ensure that you know how to operate the appliance.

Package includes one heater, one wall mounting screw pack and one manual.

- Mark the positions of the four holes to be drilled on the wall. Note. For ease of use the polystyrene has the holes marked. (FIG 1)
- Install the heater 20cm to 100cm height from the floor to get best performance.
- The screw pack contains 4 x special wall plugs, designed to be fitted into a pre drilled hole which then places the heater the correct distance from the wall surface.
- Using your pre marked holes drill the holes. (FIG 2)
- Fit the special wall plugs into the pre-drilled wall holes. (FIG 3)
- Screw the four plastic screw / bolts into the holes on the back of the heater panel.
- Holding the panel carefully push the 4 screw / bolts into the wall plugs (FIG 5). Ensure the heater is securely fixed.
- Plug the heater into a suitable power outlet

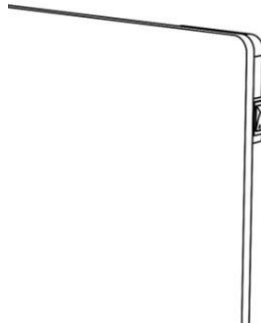


OPERATION

Check the heater is installed correctly and not damaged

Connect the supply plug to a suitable 220-240V ~ 50Hz outlet and switch on

Switch the ON/OFF switch located on the top right of the heater to the ON position. The switch will illuminate to show that power is on.



COLOUR PAINTING

Your ECO efficient heater panel may be painted to match your décor. Use only water based paint.

Disconnect from the power before painting.

Warning! Do not paint the control box or switch

SAFETY

To avoid any risk of risk of fire, shock hazard or personal injury, follow these guidelines.



Warning! When not in use or before cleaning, always disconnect the appliance from the mains supply

Warning! Do not splash with liquids. Do not allow the appliance supply plug and cord to get wet or be immersed in any liquid.

Warning! Disconnect from the mains supply and switch off when not in use.

Warning! In order to avoid overheating, do not cover the heater.



Warning! Children

This appliance is not intended for use by persons (including children) with reduced physical, sensory or mental capabilities, or lack of knowledge, unless they have been given supervision or instruction concerning safe use of the appliance by a person responsible for their safety. Young children must be supervised to ensure that they do not play with the appliance.

Warning! *Safely dispose of any plastic bags or other packaging that may present a hazard to young children of suffocation or choke hazard.*

Warning! For household indoor use only, do not use outdoors. Not for commercial use.

Warning! Do not abuse or damage the supply cord. If for any reason the cord is damaged, it must be replaced by the manufacturer, its service agent or a similarly qualified person in order to avoid hazard. A replaceable cord must be replaced with an authorised replacement from an authorized service agent.

Warning! This appliance must only be used with a genuine replacement cord set marked with the same markings as the one supplied

Warning! This appliance must not be mounted or located below or directly in front of a socket outlet.

Warning! The appliance must not be used if the ceramic panel is damaged.

Use

This appliance is intended to be used in household and similar applications such as:

- Staff kitchen areas in shops, offices and other working environments;
- Farm houses
- By clients in hotels, motels and other residential type environments;
- Bed and breakfast type environments

Warning! Do not use this heater in the immediate surroundings of a bath, a shower or a swimming pool. If it is mounted in a bathroom it must be mounted so that the switch and controls cannot be touched by a person in a bath or shower.

Warning! Fire risk exists if any heater is covered by or positioned near curtains or other combustible materials

Warning! No liability can be accepted for any damage caused by non-compliance with these instructions or any other improper use or mishandling.

SERVICE

Refer all servicing to qualified personal. This appliance has no user servicing parts or requirements. Return the appliance to the retailer if it is damaged in any way or not operating properly along with your receipt of purchase.

Examine the appliance frequently for signs of wear or damage. If there are such signs or if the appliance has been misused return it to the retailer prior to any further use for checking.

Store the appliance along with the manual and accessories together in a dry place.

WARRANTY

Retain your receipt as proof of purchase.

If for any reason the appliance does not function correctly or shows signs of damage please stop using immediately and return it immediately to the retailer.

This product is covered by a 12 month warranty by Harvey Norman (NZ) PTY Ltd. This warranty does not exclude any obligations to the consumer covered by the NZ Consumers guarantee act.

The logo for Micasa, featuring the word "micasa" in a lowercase, handwritten-style font. The letter "i" has a dot, and the letter "a" has a horizontal line underneath it.