

# Micasa



## HAIR CLIPPER

**Model: MA0028HC**

READ AND FOLLOW THESE INSTRUCTIONS. RETAIN FOR FUTURE REFERENCE

### Electrical Safety and You

Before using this appliance please read and fully understand the safety directions in this manual. Ensure that you know how to operate the appliance. All electrical equipment presents a risk to the end user. We ask that you use this appliance in a sensible safe manner in accordance with the instructions supplied for your own safety.

If for any reason the appliance does not function correctly or shows signs of damage please return it immediately to the retailer or contact the help line.

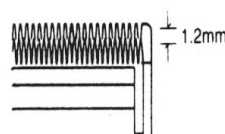
**New Zealand call toll free 0508 274 2722**

**Australia call toll free +64 9 974 9206**

### BLADE ALIGNMENT

Your clipper blades have been factory set for alignment and have been oiled. Blades must be realigned each time they have been removed for cleaning or replacement.

To realign the blades, set the lever in the uppermost position. (For a short cut)



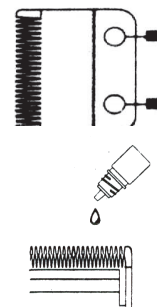
Line up the upper and bottom blade teeth, point for point. (End of top blade teeth should be approximately 1.2mm back from bottom blade teeth. Tighten screws after blade is aligned. Compare your clipper blades with the sketch.

If blade alignment is incorrect, add a few drops of oil to the blades, turn clipper on for a few moments, turn off and unplug. Loosen screws slightly and adjust. Tighten screws after blade is aligned.

### OIL

To maintain your clipper in peak condition, the blades should be oiled every few haircuts.

Do not use hair oil, grease, oil mixed with kerosene or any solvent. The solvent will evaporate and leave thick oil, which will put a load on the motor slowing down the blade motion.



### BLADE LEVER

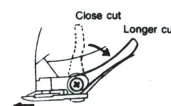
The Blade adjusting lever is conveniently located near your thumb (When held in your right hand) so it can easily be adjusted while operating the clipper.

The lever adds versatility to your clipper by allowing you to gradually change the closeness of your cut without a comb attachment.

When the lever is in the uppermost position, the blades will give you the closest cut and leave the hair very short. Pushing the lever downward gradually increases the cutting length. In its lowest position, the lever will leave the hair approximately the same length as a #1 comb.

Adjusting the lever will also extend the life of your blades since a different part of the cutting edge is used in each setting. If extremely heavy hair cutting has jammed the blades, adjusting the blades will help you remove hair that has become wedged between the two blades.

To help keep the clipper blades free of hair, rapidly move the lever from "close cut" to "longer cut" a couple of times while the clipper is running. Doing this each time after you have finished using your clipper will help to keep the blades clear of cut hair. If your clipper stops cutting and this operation does not help, your cutting blades are most likely blunt. Replace them with new blades.



### INSTRUCTIONS FOR HAIR CUTTING

Before starting the hair cut:

Inspect the clipper, making sure that the cutting blades are free of large amounts of oil. Turn the unit on to distribute any oil and to make sure that the unit is running smoothly. Wipe off any excess oil. This should be done before each use.

Seat the person so their head is approximately at your eye level. This allows ease of visibility while cutting and gives a relaxed control of the unit.

Before cutting, comb the hair so that it falls in its natural direction and is tangle free.

Place a towel around the neck and shoulders of the person having the haircut. While using the unit, you may need to untwist the cord from time to time to avoid tangling.

### TIPS FOR CUTTING

Cut the hair in a relaxed and slow manner. Use short strokes only working gradually over the entire head.

Always take off a little hair at a time, you can always trim off additional hair later.

As you work, frequently comb the hair back into the required hairstyle.

When cutting with this hair clipper, it is better to leave the hair dry, not wet. It is much easier to control the amount of hair being cut with the hair dry.

Cutting hair requires practice so it is always better to leave the hair longer for the first few haircuts until you become accustomed to the length to which each comb attachment cuts the hair.

ATTACHEMNT COMBS (see main diagram)

- Attachment Comb #1 leaves 3mm hair length.
- Attachment Comb #2 leaves 6mm hair length.
- Attachment Comb #3 leaves 9mm hair length.
- Attachment Comb #4 leaves 12mm hair length.

Each comb attachment is marked accordingly on its outside middle surface.

To attach a comb, hold the comb with its teeth upward and slide it onto and along the clipper blade until the V shaped recess in the centre of the comb firmly sits against the front of the clipper blade.

To remove the comb, pull the tab at the rear of the comb upward and away from the clipper blade.

For even cutting, allow the comb attachment / cutter to cut its way through the hair. Do not force it through quickly. Also remember to comb the hair frequently to remove trimmed hair and to check for uneven strands.

### STEP 1 – NAPE OF NECK

Attach comb attachment 3mm or 6mm.

Hold the clipper cutting edge pointed up and begin the haircut, starting at the center of the head at the base of the neck (see diagram 1).

Hold the clipper comfortably in your hand and hold lightly against the head with the comb teeth pointing upward.

Gradually and slowly lift the clipper, working upwards and outwards, through the hair, trimming just a little at a time.

As you cut, gradually lift the hair clipper head towards you. Continue to cut the back area from the bottom of the neck upward to the top of the ears.

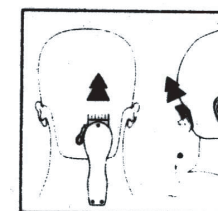


Diagram 1

**STEP 2 – BACK OF THE HEAD**

Change to the next longest comb attachment 9mm or 12mm and cut the back of the head (see diagram 2).

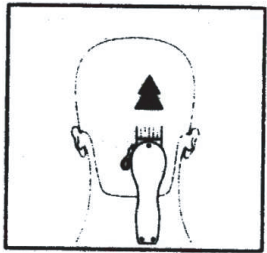


Diagram 2

**STEP 3 – SIDE OF THE HEAD**

Change to one of the shorter combs 3mm or 6mm, trim sideburns, i.e. the hair directly in front of the ears. Then change to one of the longer combs, 9mm or 12mm and continue to cut to the top of the head (see diagram 3).



Diagram 3

**STEP 4 – TOP OF THE HEAD**

Using comb attachment 9mm or 12mm, cut top of head from back to front against the direction in which the hair normally grows (see diagram 4). In some cases, this may require the reverse, or cutting from front to back. Comb attachment 3mm or 6mm are used to achieve a close crew cut or short cut.

For longer hair on top, use the comb provided and lift hair on the top of the head. Cut over the comb, with the hair lifted or hold the hair between your fingers to lift it and cut it to the desired length (see diagrams 5 and 6). Always work from the back of the head. You can cut the hair shorter gradually by reducing the space between the comb/fingers, and the head. Comb out trimmed hair and check for uneven strands.

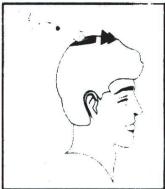


Diagram 4

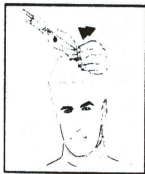


Diagram 5

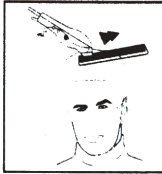


Diagram 6

**STEP 5 – THE FINISHING TOUCH**

Finally, use the taper lever without an attachment comb for close trimming around the base of the neck, the sides of the neck and the ears.

To produce a clean straight line at the sideburns, reverse the hair clipper by turning the reverse side uppermost (see diagram 7).

Press the clipper at right angles to the head, tips of the blades lightly touching the skin and work downwards. This way you will obtain as clean a cut as would be given by a razor.

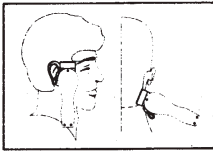


Diagram 7

**SHORT TAPERED STYLES – ‘FLAT TOPS’ AND SHORT CUTS**

Starting with the longest attachment comb (12mm) cut from the back of the neck to the crown. Hold the attachment comb flat against the head and slowly move the clipper through the hair, as shown (see diagram 8).

Use the same procedure from the lower side to the upper side of the head, as illustrated. Then cut the hair against the direction in which it grows from the front to the crown and then level the cut with the sides.

To give a ‘flat top’ look, the hair on top of the head must be cut over the top of a flat comb rather than by using the attachment comb.

Use closer cutting attachment combs to taper the hair down to the neckline as desired. Comb hair and check for uneven areas.



Diagram 8



**Important Safety Instructions**

**Warning! Children**

This appliance is not intended for use by persons (including children) with reduced physical, sensory or mental capabilities, or lack of knowledge, unless they have been given supervision or instruction concerning safe use of the appliance by a person responsible for their safety. Young children must be supervised to ensure that they do not play with the appliance. Safely dispose of any plastic bags or other dispose of any plastic bags or other packaging that may present a hazard to young children of suffocation or choke hazard.

**Warning! Unattended Appliances**

Do not leave any appliance unattended when in use or connected to the mains power or near children. Always unplug any appliance when not in use.

**Warning!** Keep the appliance dry.

**Warning!** This appliance is not a washable shaving appliance.

**Safety**

For household indoor use only, do not use outdoors. Not for commercial use.

Do not let the supply cord hang over the edge of any table or bench as young children may pull on the cord creating a risk of electric shock, personal injury or damage.

This appliance must not be operated by means of an external timer or separate control system.

If smoke is seen disconnect from the mains supply immediately.

If the appliance is to be used by a third party, please supply these instructions with it.

No liability will be accepted for any personal injury or damage caused by failure to follow these instructions.

**Warning! Moisture**

Do not immerse this appliance in any liquid. Do not operate with wet hands. Do not not splash the appliance with water.

**Moving parts and sharp edges**

Do not touch moving parts. Keep hands, hair, clothing etc away from moving parts. Switch off the appliance and disconnect from supply before changing accessories or approaching parts that move in use

**Power cord**

Do not abuse or damage the supply cord. If for any reason the cord is damaged, it must be replaced by the manufacturer, its service agent or a similarly qualified person in order to avoid hazard. A replaceable cord must be replaced with an authorised replacement from an authorized service agent.

**Cleaning**

Clean only with a damp cloth, dry with a dry towel. Do not immerse.

**Ventilation**

Do not block any ventilation holes.

**Use**

This appliance is for indoor use only.

This appliance is not for commercial use.

This appliance is intended to be used in household and similar applications such as

- Staff kitchen areas in shops, offices and other working environments.
- Farm houses
- By clients in hotels, motels and other residential type environments.
- Bed and breakfast type environments.

**Service**

Refer all servicing to qualified personal. This appliance has no user servicing parts or requirements. Return the appliance to the retailer if it is damaged in any way or not operating properly.

**Specifications**

220-240V~ AC 50Hz 10 Watts Class 11

**Warranty**

This appliance is covered by a 12 month warranty with proof of purchase. Return any faulty appliance along with your receipt to the retailer.